



Canary User Conference

August 11- 14 State College, Pennsylvania



What's new in Axiom?



Isaac Stern



Presenter Background

- 14 years of software development experience at Canary
- Team lead with expertise in full-stack development
- Collaborate with the team to enhance products across the board
- Primary expertise:
 - Axiom: A powerful data visualization and analysis product
 - Store and Forward: A robust and reliable data transfer service

Axiom Overview

- A visualization tool designed to enable actionable decisions using real-time or historical data for operations, analysis, and reporting.
- A web-based product featuring a built-in designer for creating dashboards and advanced trend charts.
- Fully integrated into the Canary product ecosystem
 - Leverages asset models from views
 - Utilizes events monitored by the calculations service

Today's Topics

- Identity Service Integration
- Merged Browse Dialog for Applications and Charts
- New URL Parameters
- Multi-Page Reports
- Cross Application Copy/Paste
- Control Alignment Shortcuts
- Line Control Usage
- State Trend Drawing
- Asset Trend Drawing
- Batch Trend Drawing
- Event Table Properties

** Introduced in version 24+*

** Present prior to version 24 (Lesser-known features)*

** Currently in development (Targeted for 25.4 release)*



Identity Service Integration

- All clients now defer authentication and authorization to the identity service
- Identity Supports:
 - Windows Active Directory
 - *Kerberos*
 - Anonymous
 - *OpenID Connect*
 - *Auth0*
 - *Microsoft Entra ID (Azure Active Directory)*
 - *Okta*
 - *Etc.*
 - SAML

** Present prior to version 24*

** Introduced in version 24+*

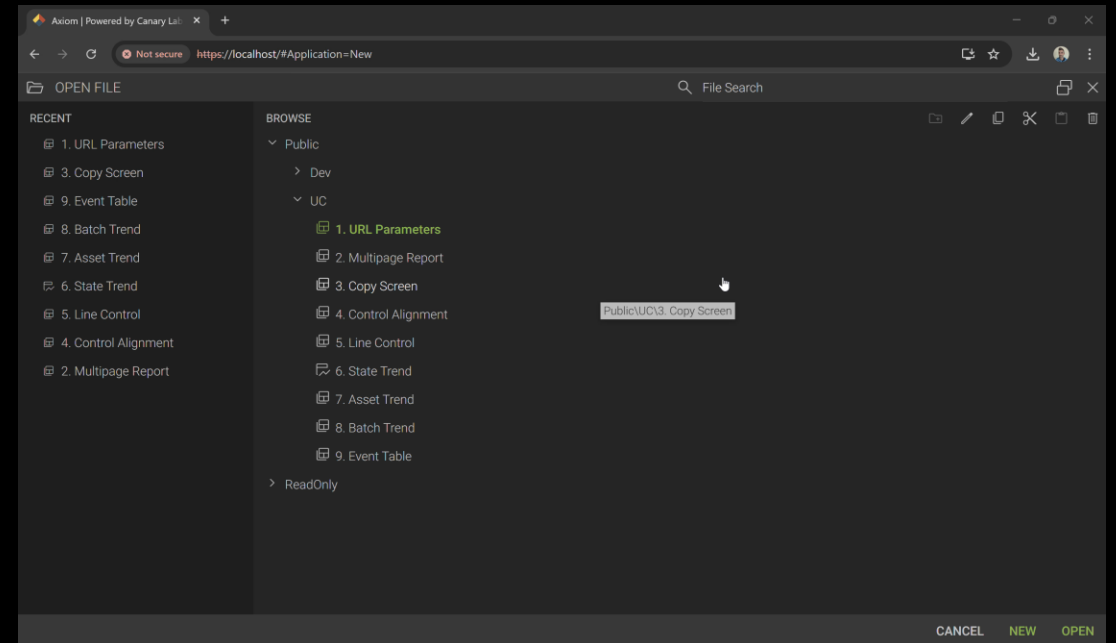


Merged Browse Dialog for Applications/Charts

- No mode to switch between Application/Chart
- Icons represent kind:

 = Application

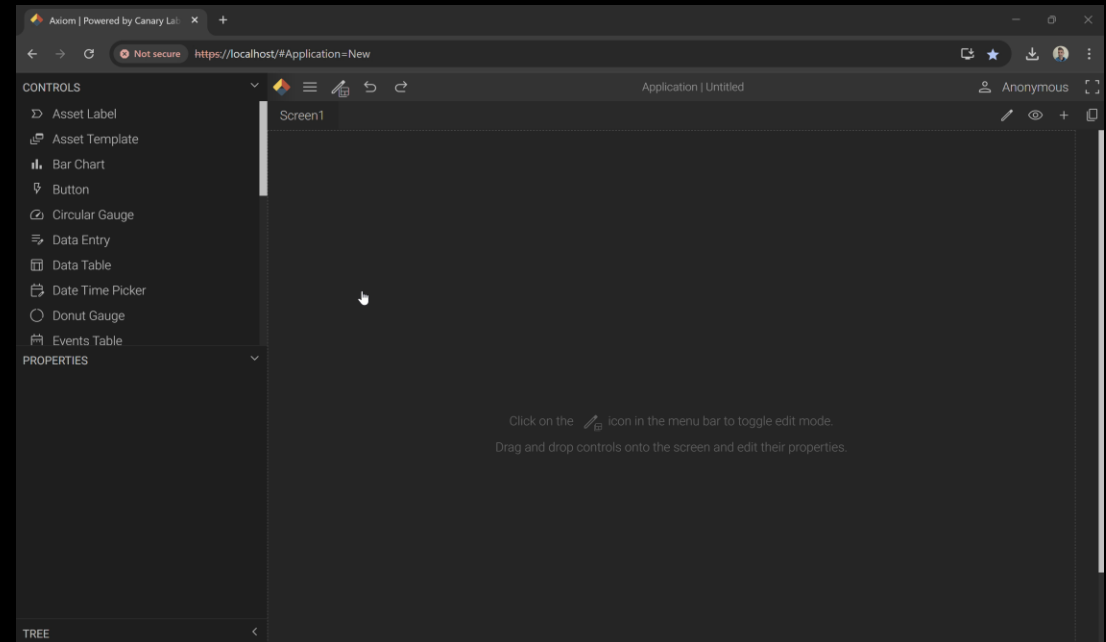
 = Chart



[Click to play video](#)

New URL Parameters (Tutorials)

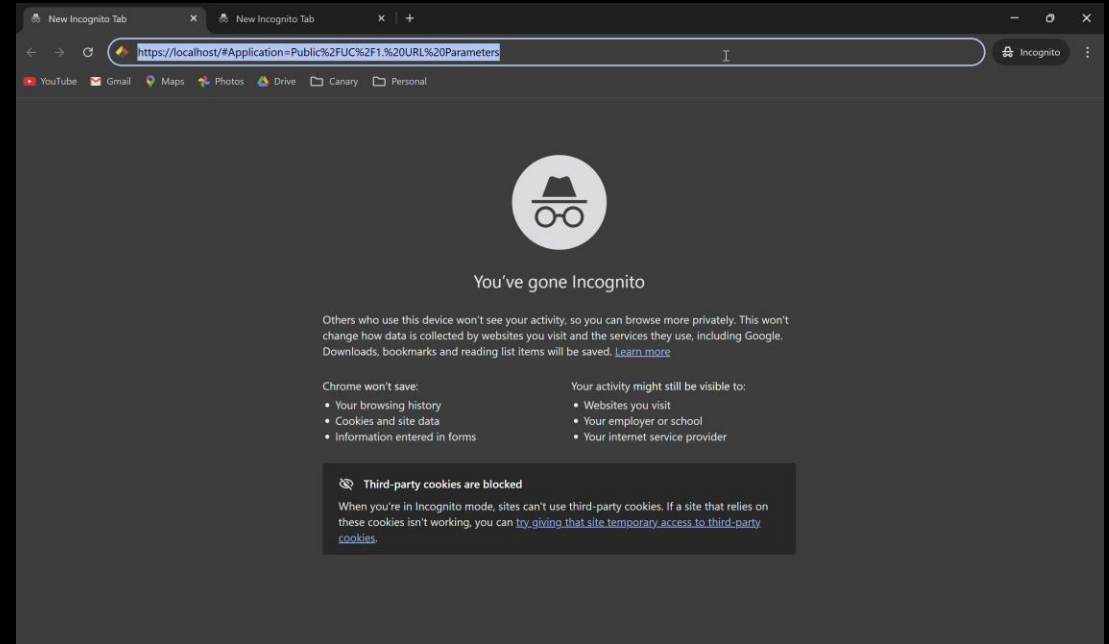
Refer to Axiom “Tutorials” on URL Parameters to see full list of parameters and how simple examples.



[Click to play video](#)

New URL Parameters (ProviderName)

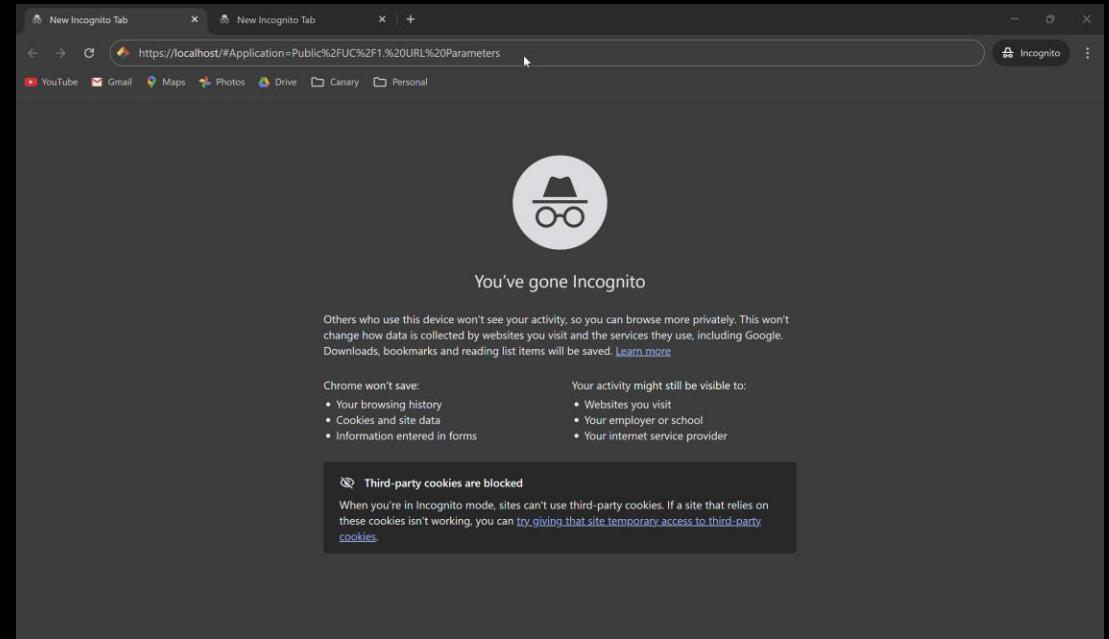
The “ProviderName” parameter can be used to bypass selection of an authentication provider when multiple providers have been configured.



Click to play video

New URL Parameters (API Token)

The “API Token” parameter will login as the user the token has been mapped to. This is useful for login from embedded iframes, but should not be used across public domains.

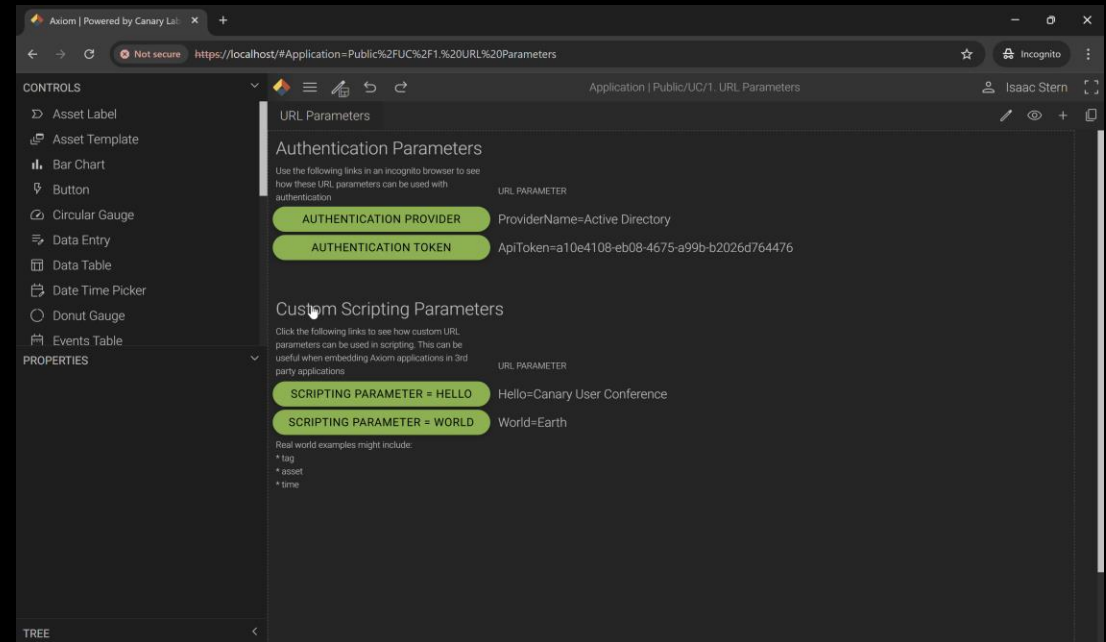


Click to play video

New URL Parameters (Custom Parameters)

Custom parameters can be passed and used in application scripting. Examples might be:

- BaseTagPath
- LimitValues
- TimeRange
- Context



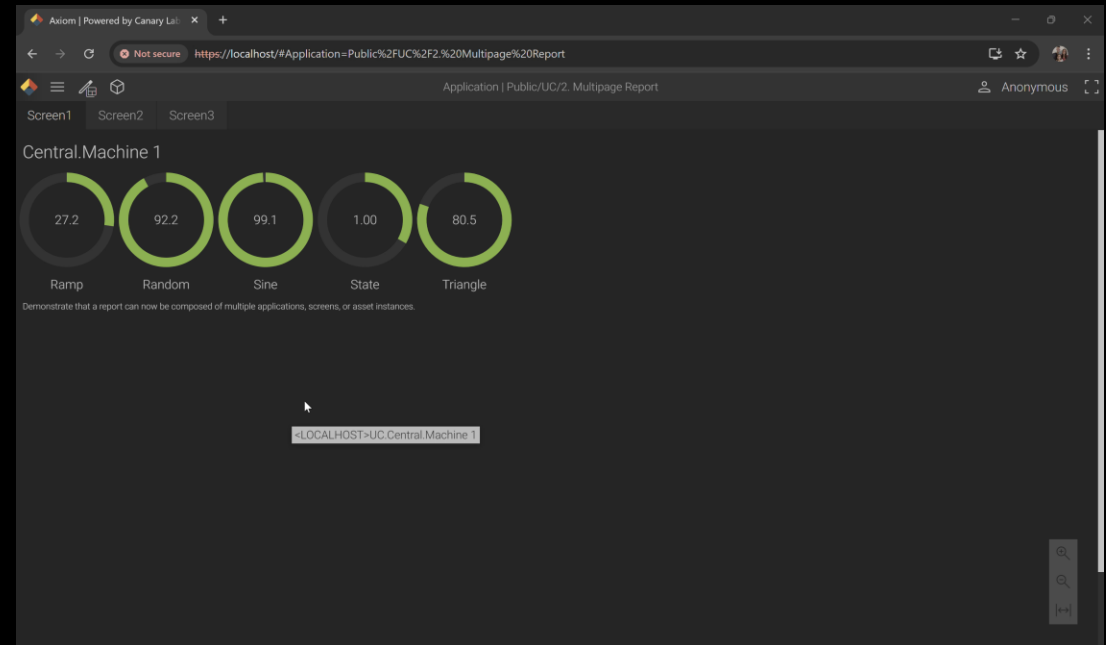
[Click to play video](#)

Multi-Page Reports

Multiple application screens can be added to a single report job.

Pages can specify which screen they reference.

Pages can specify which asset they reference.



[Click to play video](#)

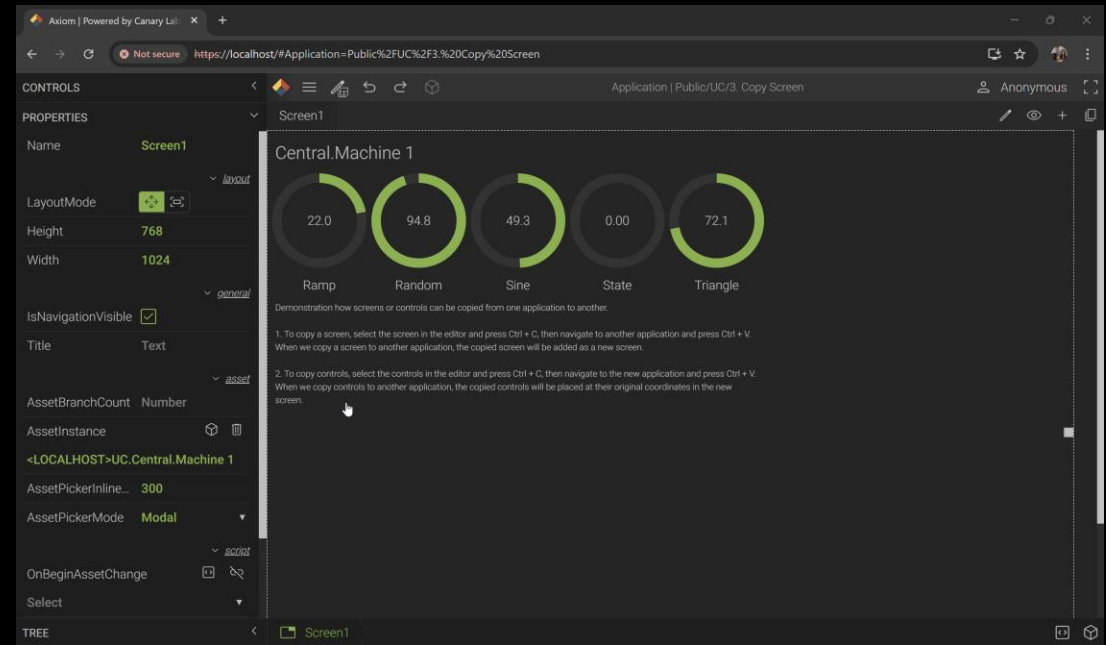
Cross Application Copy/Paste

Screens and controls can be copied across applications.

Use Ctrl+C to copy and Ctrl+V to paste.

When a screen is copied into another application, it is added as a new screen.

When one or more controls are copied into another application, they are placed using their original coordinates.






[Click to play video](#)




Control Alignment Shortcuts

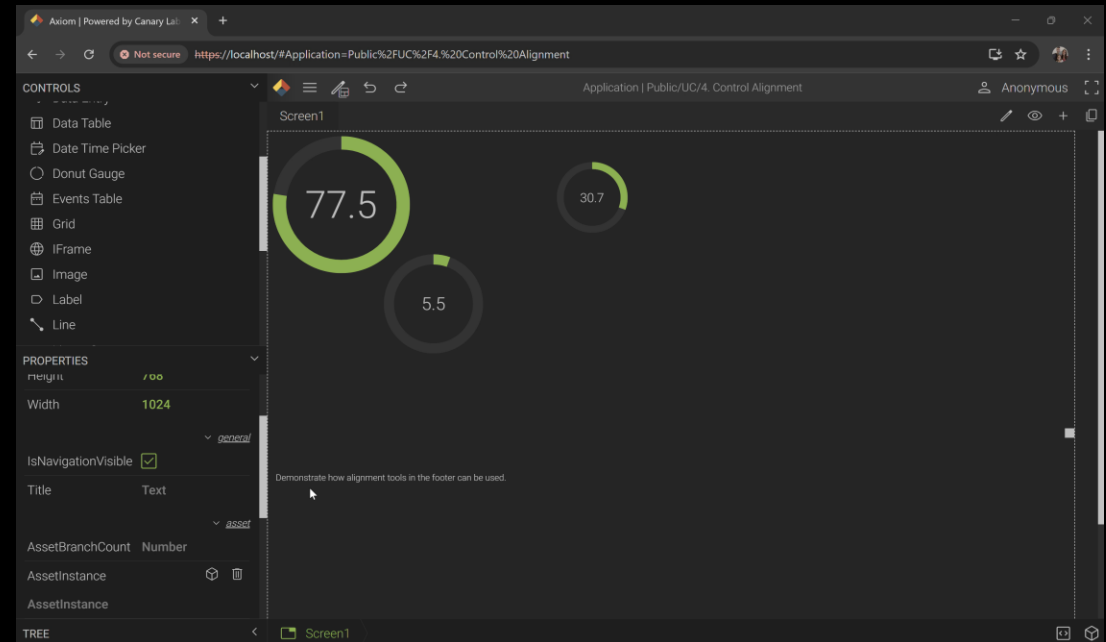
Hold Ctrl while selecting to multi-select controls or create a drag box that will select all controls within.

When multiple controls are selected, alignment buttons will appear in the footer.

  = stack controls vertically or horizontally

   = align controls left, center, or right

   = align controls top, center, or bottom

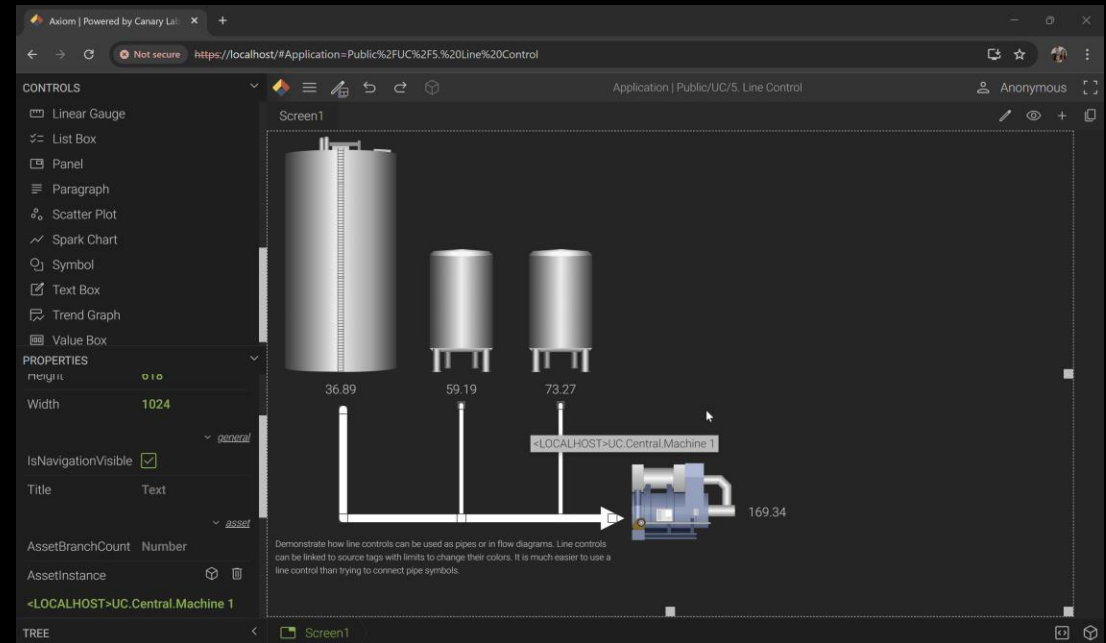


[Click to play video](#)

Line Control Usage

Line controls can be used to diagram pipes or flow in an application.

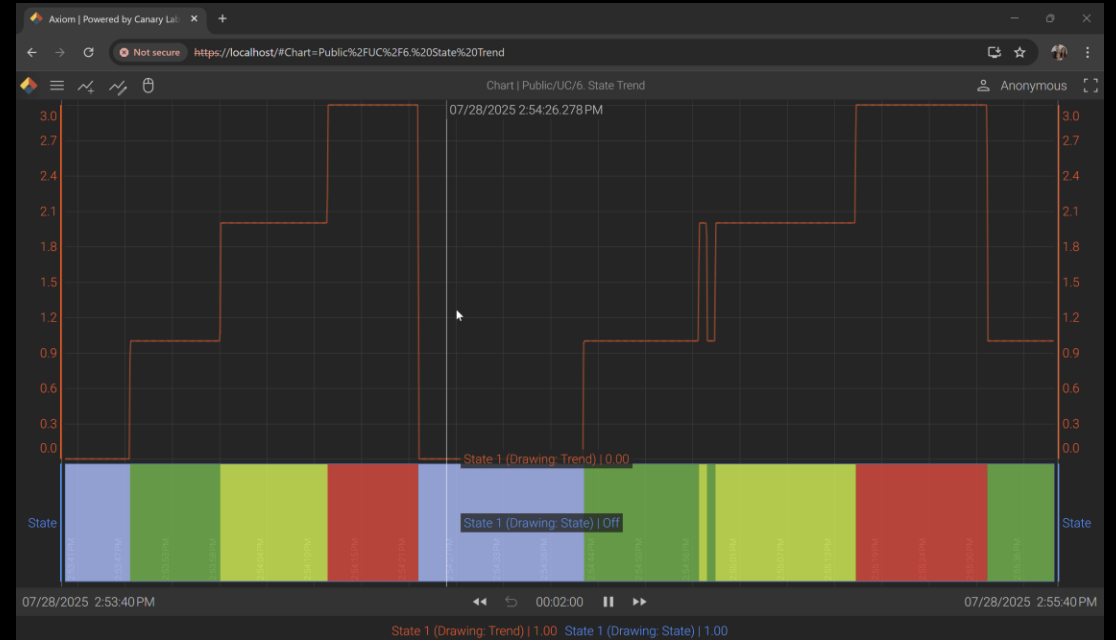
Complex shapes can be used, thickness can be changed, and limits can be used to change colors.



[Click to play video](#)

State Trend Drawing

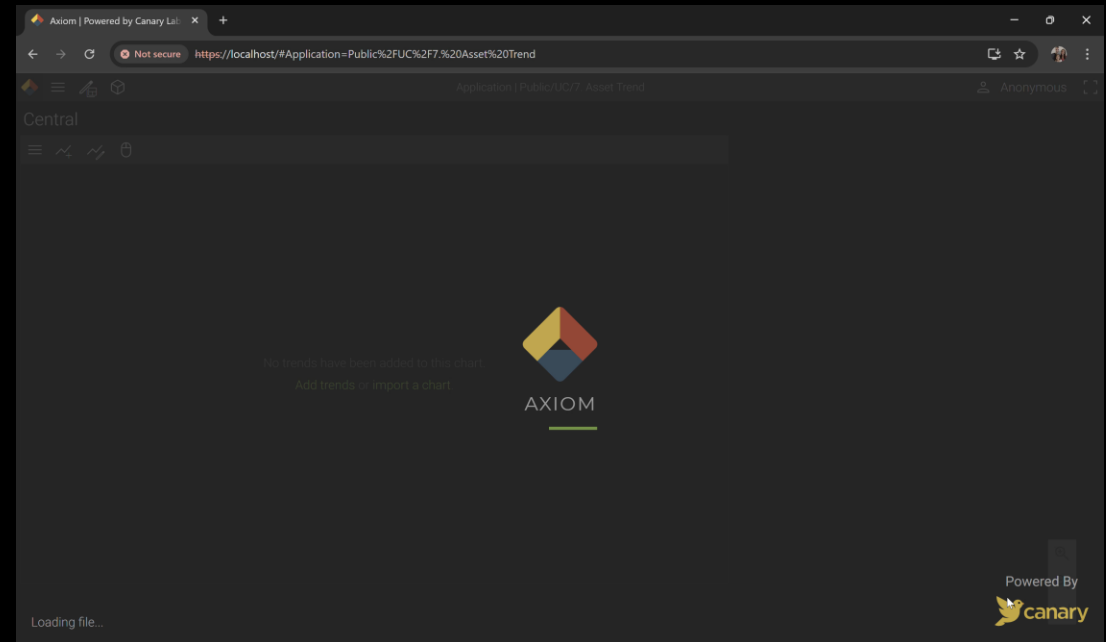
Tags that log number values as enumerations can now be configured to draw as color boxes with text descriptions.



[Click to play video](#)

Asset Trend Drawing

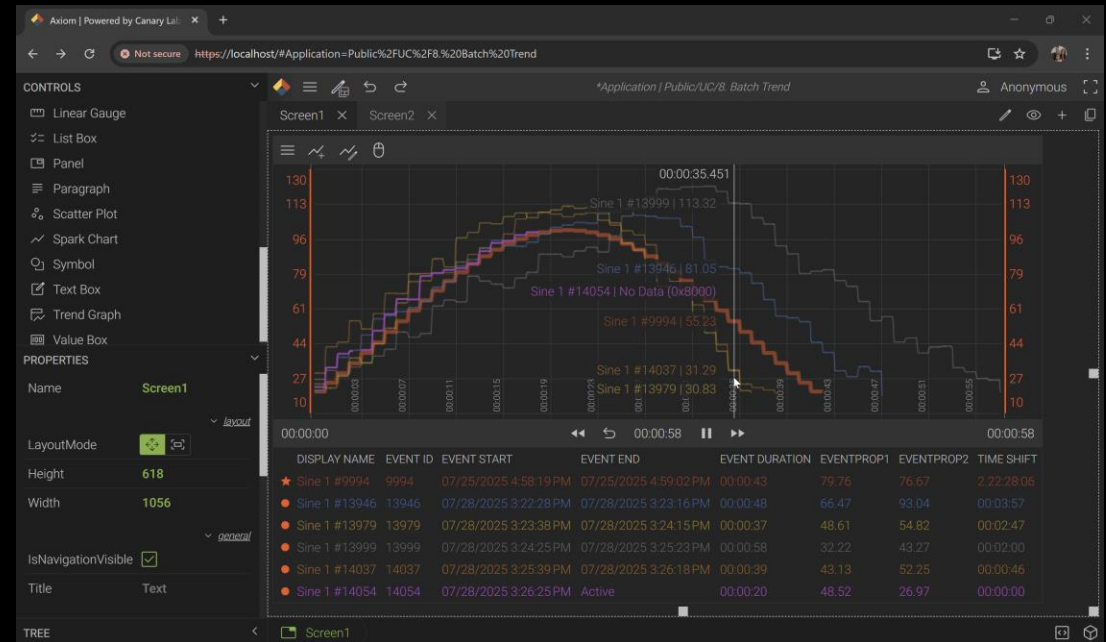
Asset context can be assigned to a TrendGraph control for quick comparison of assets.



[Click to play video](#)

Batch Trend Drawing

Event context can be assigned to a TrendGraph control for quick comparison of events.



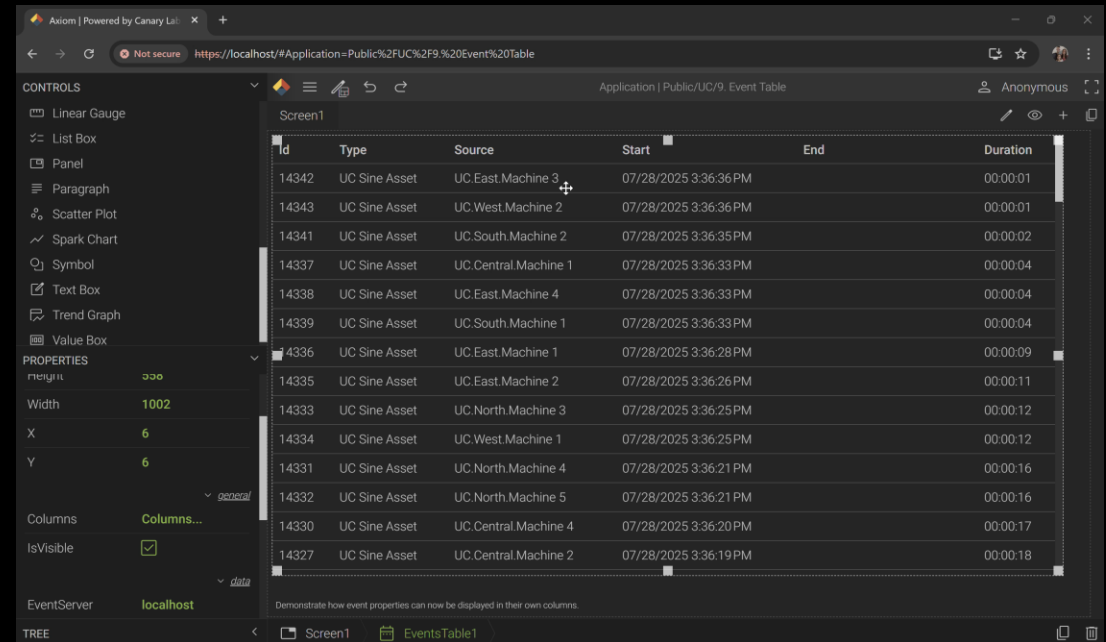
[Click to play video](#)



* Currently in development (Targeted for 25.4 release)

Event Table Properties

The EventTable control can support individual columns for custom properties configured on an event.



The screenshot shows the Axiom interface with the EventTable control. The table displays the following data:

Id	Type	Source	Start	End	Duration
14342	UC Sine Asset	UC.East.Machine 3	07/28/2025 3:36:36 PM		00:00:01
14343	UC Sine Asset	UC.West.Machine 2	07/28/2025 3:36:36 PM		00:00:01
14341	UC Sine Asset	UC.South.Machine 2	07/28/2025 3:36:35 PM		00:00:02
14337	UC Sine Asset	UC.Central.Machine 1	07/28/2025 3:36:33 PM		00:00:04
14338	UC Sine Asset	UC.East.Machine 4	07/28/2025 3:36:33 PM		00:00:04
14339	UC Sine Asset	UC.South.Machine 1	07/28/2025 3:36:33 PM		00:00:04
14336	UC Sine Asset	UC.East.Machine 1	07/28/2025 3:36:28 PM		00:00:09
14335	UC Sine Asset	UC.East.Machine 2	07/28/2025 3:36:26 PM		00:00:11
14333	UC Sine Asset	UC.North.Machine 3	07/28/2025 3:36:25 PM		00:00:12
14334	UC Sine Asset	UC.West.Machine 1	07/28/2025 3:36:25 PM		00:00:12
14331	UC Sine Asset	UC.North.Machine 4	07/28/2025 3:36:21 PM		00:00:16
14332	UC Sine Asset	UC.North.Machine 5	07/28/2025 3:36:21 PM		00:00:16
14330	UC Sine Asset	UC.Central.Machine 4	07/28/2025 3:36:20 PM		00:00:17
14327	UC Sine Asset	UC.Central.Machine 2	07/28/2025 3:36:19 PM		00:00:18

[Click to play video](#)

Conclusions

I hope these features and tips help you optimize your workflows and boost productivity.

At Canary, we are committed to continuously improving our software. Your feedback plays a crucial role in refining existing features and shaping new ones to meet the needs of diverse industries.

We're excited about the opportunities ahead and look forward to introducing more features in the future.



Questions/Answers